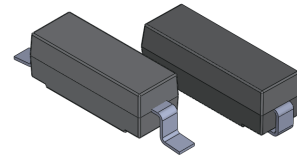


BSM-05G/J Series

Molded Dry Reed Switch

Features

- Ideal for proximity sensors & medical applications
- Contact layers: gold, sputtered ruthenium
- 5 Watt rating
- Tape & reel packaging



Order Code

BSM-05X-XXXX
a b

a:Lead configuration:G=SMD G Model,J=SMD J Model

b:AT Ranges

Contact Specifications

Operate Range	5-15AT*
Release Range	2-13AT*
Switched Power (max)	5W
Max. Switching Voltage	175VDC/140VAC,RMS value
Max.Switching Current	350mA(DC)/250mA(AC,RMS value)
Max. Carry Current	0.5A
Contact Resistance (initial max.)	160mΩ
Contact Resistance(initial typ.)	140mΩ

Electrcal Specifications

Breakdown Voltage : Between contacts	230VDC
Insulation Resistance	10 ⁶ MΩ

Mechanical Specifications

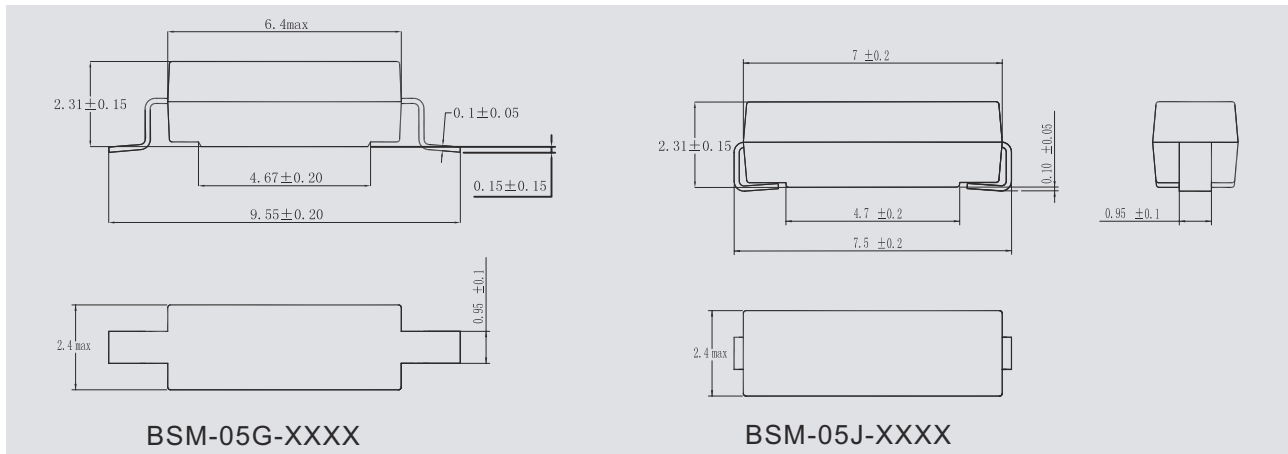
Vibration(0 to 2KHz 1.5mm)	10G
Shock(11mS 1/2 Sin Wave)	100G

Environmental

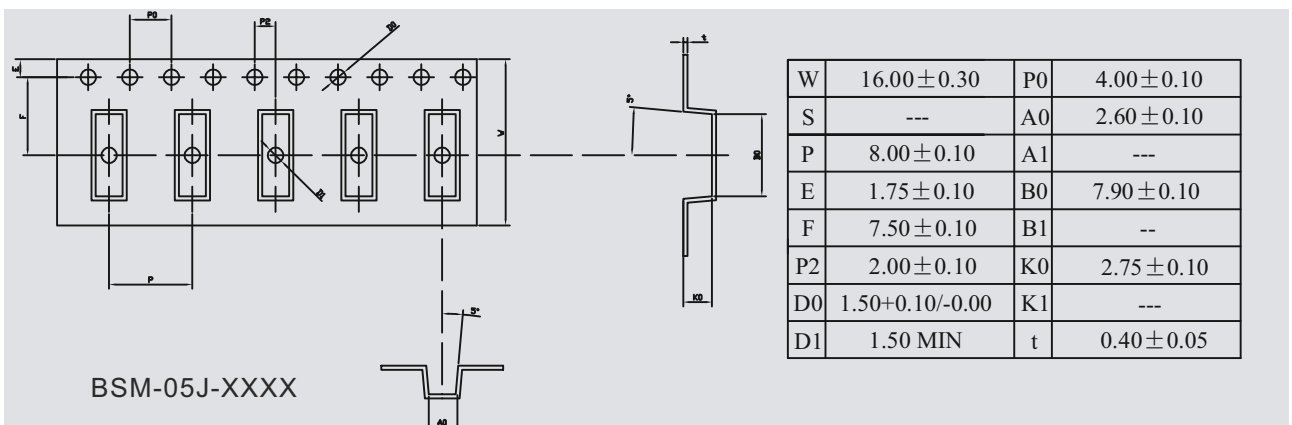
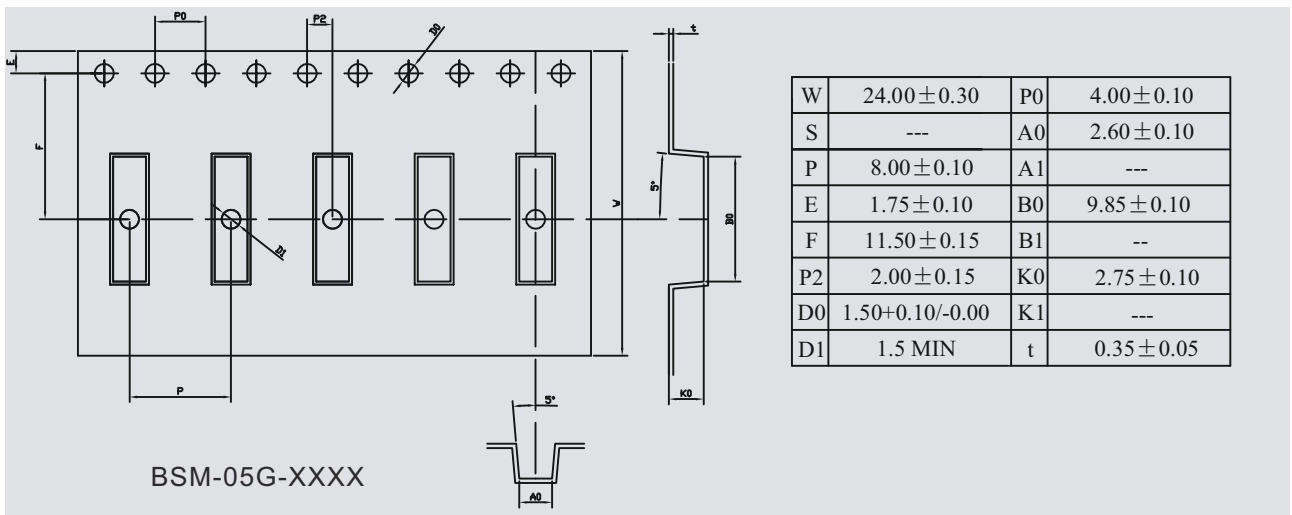
Storage Temp	-40°C~+125°C
Operating Temp	-40°C~+125°C

NOTES: * AT values are based on full length, measured using Philips Standard Coil (PSC).**230V for AT>10, 175V for AT<10

Measurements: [Unit:mm]



Dimensions for RI-80 SMDM Tape and Reel(Unit:mm)



packing quantity:2000 pieces/reel